

Roger Guide-U

Guided tours that sparkle



röger

PHONAK
life is on



The unique Roger Guide-U technology

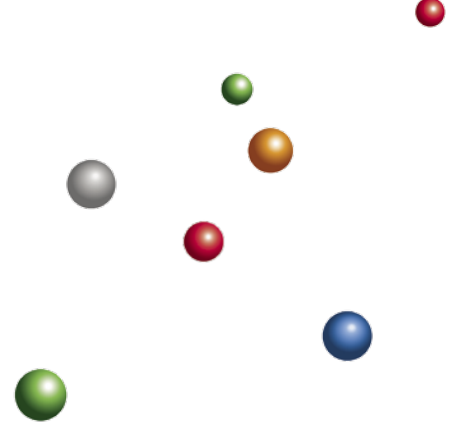
Roger is a new digital standard

People recognize the word Roger as meaning "message received and understood" - which is why we chose it for the name of our new digital wireless standard, inside every Guide-U system. Roger enables low-delay, highly reliable audio broadcasts from a transmitter to miniaturized receivers. It includes adaptive algorithms to avoid interference, fully automated features, and a simple connection concept, all of which make using Roger systems a breeze. Roger operates on the license-free 2.4 GHz band.



Receiver shown actual size

Guided tours that sparkle



The perfect system for every destination

Roger Guide-U by Phonak is the audio tour guiding solution of choice for the world's biggest visitor attractions and corporate destinations. Powered by Roger technology, it offers unsurpassed speech clarity and is simple enough for every guide and visitor to use.

Highly versatile

Roger Guide-U is a totally flexible system, so whatever your requirements there is a configuration available to inform and delight your guests.

- Multiple transmitters possible – enabling visitor participation and secondary presenters
- Several groups can operate in the same room
- Compatible with hearing aids – ensuring no-one misses a word
- Multimedia-ready – transmit external audio content directly to Guide-U headsets
- Guide-U can even be used with a site's existing loudspeaker systems

Pure simplicity

Roger Guide-U is the most usable guiding system on the market. Its speaker channels are created automatically, so no frequency management is required. Every channel is 100% immune to interference from nearby appliances, such as WiFi, Bluetooth, GSM networks etc. Tour guides or technical staff can connect new headset receivers with a single button click, and there is no limit to the number of Guide-U groups that can operate on one site.

Miniaturized elegance

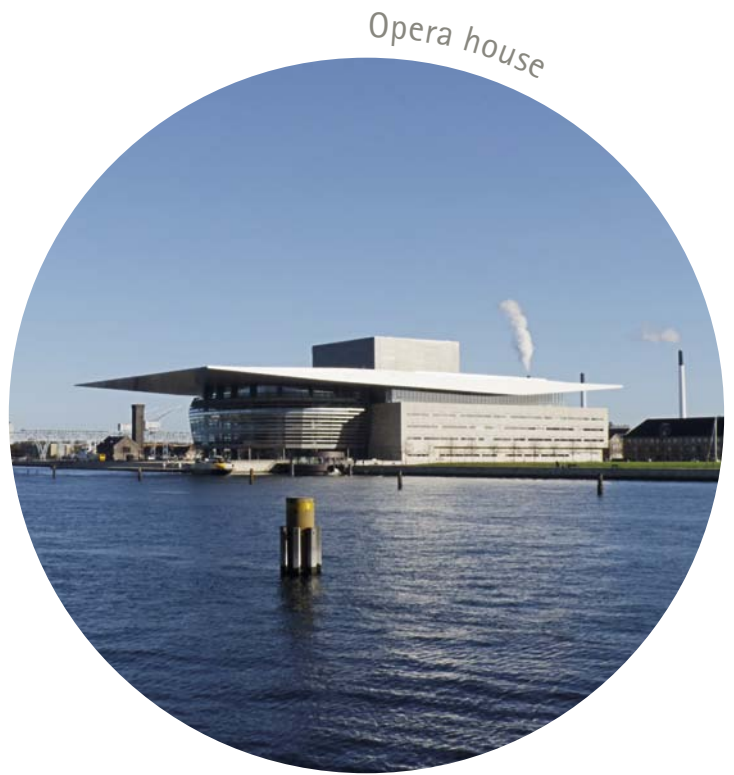
Elegant Roger Guide-U transmitters and receivers add a touch of style to proceedings. These sleek, lightweight devices are free of unappealing knobs, switches or antennae, ensuring you can be proud to hand a Guide-U to every visitor.



Museum



Governmental building



Opera house



Factory



Heritage site

The perfect system for every destination ...

Roger Guide-U brings a new level of audio clarity to traditional guided tours. Whether in a **museum**, a **factory**, in a **bus** or on a **boat**, Guide-U transmits highly intelligible speech to an unlimited number of listeners, every time.

Its signal is completely immune to electromagnetic interference from nearby circuits – **meaning no hissing or static** can be heard – and its adaptive behavior optimizes each receiver's volume settings to ensure the speaker's words are easily distinguishable from any surrounding noise.

You can even add additional Guide-U microphones for more inclusive seminars and Q&A's.

Whatever your site, whatever your needs, there is a Guide-U for you.

... and for every listener

Even guests who wear hearing aids can benefit – **barrier free** – from Guide-U's sparkling speech clarity. Simply hand these visitors a **Roger Guide-U inductive-loop receiver**. This sends the speaker's words directly into a guest's hearing aids to ensure they catch every word.

Guests whose hearing aids are already equipped with Phonak Roger or FM receivers can listen in instantly, without needing a Guide-U receiver.



Highly versatile

Interactivity guaranteed

With Roger Guide-U **several presenters** can transmit on the same channel to better inform and entertain the group. And if there are visitor questions and feedback, one or more **passaround microphones** can be used to guarantee no-one misses out on the discussion. Up to 35 transmitters can be used per group, while the number of receivers is unlimited.



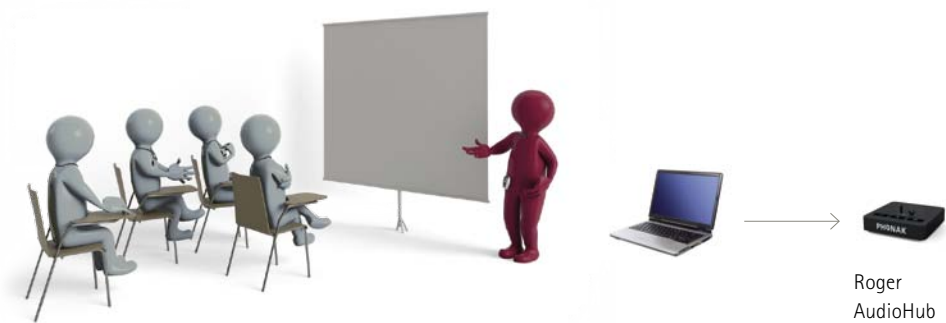
Several groups, one presentation

When different groups converge for a joint presentation – for example in an auditorium at the end of a tour – **Roger WallPilot** will connect every guest's receiver to the main presenter's audio channel, without guests or speakers having to do a thing.



Multimedia made easy

If your tour includes an external audio component, such as the sound from a video presentation or an audio sample (e.g. from an MP3 player, audio guide, laptop etc.) simply connect **Roger AudioHub** to transmit this audio signal to every listener's headset. The guide will still be able to speak to the group and visitors can continue to use Guide-U passaround microphones to add their questions and thoughts.



Room amplification included

If a training or conference room already contains loudspeakers, you can easily connect Guide-U transmitters to this system using the **Roger DigiMaster X**. This channels the speaker's words directly through the loudspeakers without the presenter needing to change microphones. For sites that already use Roger Dynamic SoundField amplification system, this interface is not required as Guide-U is compatible out of the box.

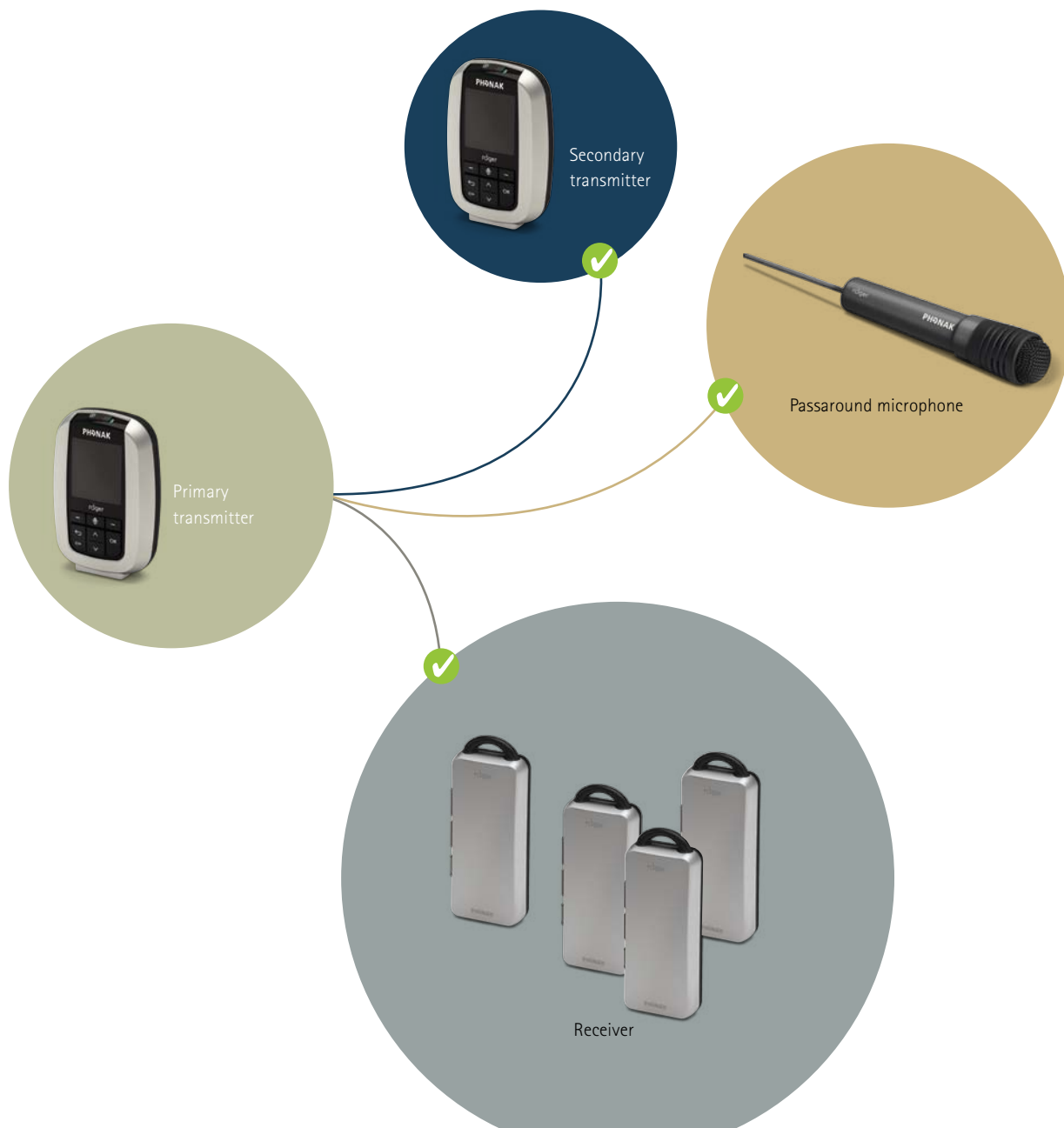




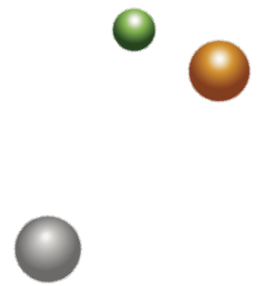
Pure simplicity

Roger Guide-U is designed for anyone to use. All its main settings are automated, so instead of struggling with configuration and channels, speakers can focus on leading tours that fascinate and enthrall your guests.

- New transmitters and receivers are connected with a single button press
- Channels are allocated automatically; there's no need to select and manage channels for different tour groups
- Connected devices stay connected, even after rebooting
- Transmission only occurs when the speaker's voice is detected
- Headphone volumes are automatically adjusted to provide the clearest possible contrast against any surrounding noise



Miniaturized elegance



A wide range of sleek and compact Roger Guide-U solutions are available, allowing you to create exactly the tour guiding system your organisation requires. Start by determining the number of transmitters and receiver packs you require. Then choose your preferred headphones and microphones, before adding any relevant accessories.

Transmitters

Roger inspiro Guide-U transmitter (1)

- Intuitive user interface in 16 languages
- Two menu options: Quick or Full
- Choice of microphones
- 3.5 mm audio-in socket (for sending external audio content to the group)
- Simultaneous transmission to Roger and Dynamic FM receivers possible
- Audio bandwidth: 100 Hz – 7.3 kHz
- Range: up to 40 meters / 130 feet depending on surrounding
- Battery: Li-Pol rechargeable (operating time approx. 12 h, charging time approx. 2 h)
- Weight: 69 g / 0.15 lb
- Dimensions 83 × 56 × 24 mm / 3.26 × 2.20 × 0.94 inches
- Worn on belt (clip) or around neck (loop)

Roger DynaMic passaround microphone (2)

- Secondary microphone
- Dimensions: 210 × 32 mm / 8.26 × 1.26 inches (antenna: 150 mm / 5.9 inches)
- Weight: 110 g / 0.24 lbs
- Battery: rechargeable Li-Pol (1000 mAh)

Receivers

Roger Receiver Guide-U (3)

- World's smallest and lightest tour guiding receiver
- Worn around the neck (lanyard)
- Dimensions: 66 × 29 × 12 mm / 2.60 × 1.14 × 0.47 inches
- Weight: 20 g / 0.04 lb
- 3 buttons: on/off, volume up, volume down
- Indicators: volume, battery status
- Battery: rechargeable Li-Pol (operating time approx. 10 h, charging time approx. 2 h)
- Headphone socket: 2.5 mm (max. 150 mV / 32 Ohm)

Roger MyLink Guide-U receiver with inductive loop for use with hearing aids (4)

- Worn around the neck (loop)
- Compatible with all hearing aids, cochlear implants and BAHAs featuring a telecoil





Headphones

Guide-U headphones (5)

- Dual earphones for the best listening experience

Guide-U earphone (6)

- Single-ear earphone
- Compatible with helmets or hearing protection ear cups



Microphones

iLapel (shirt-worn) (7)

- Miniature shirt-worn directional microphone

EasyBoom (head-worn) (8)

- Head-worn microphone for best speech-in-noise performance



Roger accessories

Roger WallPilot (9)

- Automatically connects Roger receivers and transmitters to a room's pre-defined network when these pass the device
- Usage: wall-mounted (plugged into power outlet) or on table (battery powered)
- Dimensions: 96 × 80 × 42 mm / 3.8 × 3.1 × 1.6 inches

Roger AudioHub (10)

- Its two 3.5 mm sockets allow up to two audio sources to be transmitted to any Roger/FM receivers in the room
- Mini-USB power input
- Dimensions: 90 × 90 × 20 mm / 3.5 × 3.5 × 0.8 inches

Roger DigiMaster X (11)

- This Roger receiver connects to a room's existing amplification system via an 3.5 mm output socket to the existing amplifier's analog audio input
- Mini-USB power input
- Dimensions: 90 × 90 × 20 mm / 3.5 × 3.5 × 0.8 inches

Roger DigiMaster 5000/7000 (12)

- Loudspeaker with integrated Roger receiver
- Dimensions: 885 (H) × 72 (D) mm, 35 × 2.8 inches
- 19VDC power input

Accessories

Carry case (13)

- Light and easy to carry
- Holds 1 transmitter and 12 receivers (incl. charging elements)

Charging rail (14)

- Fits in 19-inch rack
- Holds 12 receivers and one transmitter



Life is on

We are sensitive to the needs of everyone who depends on our knowledge, ideas and care. And by creatively challenging the limits of technology, we develop innovations that help people hear, understand and experience more of life's rich soundscapes.

Interact freely. Communicate with confidence.
Live without limit. Life is on.

www.phonak.com

www.phonak-communications.com